

# symposium

AT THE ZOOLOGICAL SOCIETY OF LONDON



15 and 16 October 2009 ALL DAY | [www.zsl.org/science/scientific-meetings/](http://www.zsl.org/science/scientific-meetings/) | tickets in advance only

## IMPACTS OF ENVIRONMENTAL CHANGE ON REPRODUCTION AND DEVELOPMENT IN WILDLIFE

organised by William V. Holt, Stuart R. Milligan and Rhiannon E. Lloyd

Species adapt to the environment over millennia, and reproduction is therefore highly controlled by environment, but what happens when the environment changes more quickly than expected? Will reproduction go wrong or is it sufficiently robust to cope?

The symposium will examine the ways in which environmental change, such as global warming, increased radiation and exposure to endocrine disrupting chemicals, influences not only short-term reproductive success and development but also long-term survival and fitness. We will focus on the following questions:

- Will environmental change lead to mismatches between food supplies, optimal physical environments and reproductive demands?
- How will these changes interact at the population level to cause the collapse or alteration of food web structures?
- What are the direct effects of environmental stresses (e.g. temperature, drought, environmental pollutants) on the reproductive success of individuals and populations?
- To what extent do environmental stresses during early life affect adult health through developmental programming mechanisms?

In this symposium, experts in ecology, nutrition, reproductive physiology, developmental biology and molecular biology share their insights into these questions.

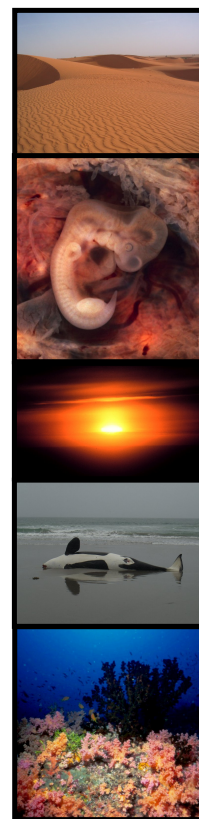


Image credits (from top): Jj-Elle; Ed Uthman, MD, Commander John Bortniak, NOAA Corps; kalevkevadi; Alex D. Rogers

**Tickets** must be booked in advance; the deadline for registrations is 1 October 2009. A registration form will be available shortly from [www.zsl.org/science/scientific-meetings](http://www.zsl.org/science/scientific-meetings).

**Prices** for two days (or part days) £130 (£65 for students or ZSL Fellows & Friends)  
for one day (or part day) £80 (£40 for students or ZSL Fellows & Friends)

Lunch and refreshments are included. A 3-course dinner with the speakers will be held on the Thursday evening and tickets are an additional £40 per person. Please indicate if you have any special dietary requirements on your registration form.

**Relevant posters** will be on display throughout the meeting and attendees will have the opportunity to study posters and interact with speakers and delegates during breaks. Please email poster proposals to [joy.hayward@zsl.org](mailto:joy.hayward@zsl.org) for consideration by 18 September 2009 (max 250 words). Notification of accepted poster presentations will be given by 25 September 2009.

**Further Information:** please see [www.zsl.org/science/scientific-meetings](http://www.zsl.org/science/scientific-meetings) or contact Joy Hayward, Scientific Meetings Coordinator, ZSL, Regents Park, London NW1 4RY, UK. Tel: +44 (0)20 7449 6227. Fax: +44 (0)20 7449 6411. E-mail: [joy.hayward@zsl.org](mailto:joy.hayward@zsl.org).