

8

Axolotl (B.U.G.S!)

The axolotl is a strange BROWNIE animal. It's like a tadpole that never grows up so it lives all its life under water. It breathes through gills that stick out the side of its head.

Look closely at the axolotls



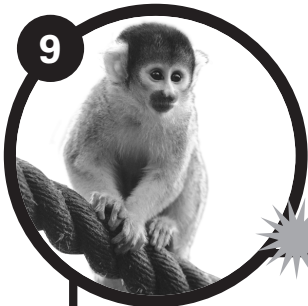
Tick the correct picture

Why are axolotls such liars?

Because they are am-FIB-ians



9



Squirrel Monkeys (Turn right out of B.U.G.S!)



Get close to our squirrel monkeys. What are they eating?

Can you use the play equipment to move like the monkeys?

Hope you enjoyed your visit to London Zoo!

Totally Wild

Fun Trail

Spot the words BROWNIES, CUBS, GUIDES AND SCOUTS

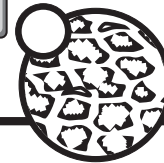
1

Okapi (off footprint 1, near the giraffes)

Okapi have mainly BROWNIE coloured coats, but they have black and white legs.



Tick the pattern they have on their legs...



2

Meerkats (off footprint 3)

In nice weather, one of the meerkats will be a SCOUT and look out for animals that may attack the group.

Can you see one on duty on top of the large rock?



Tick which animals are they looking out for?

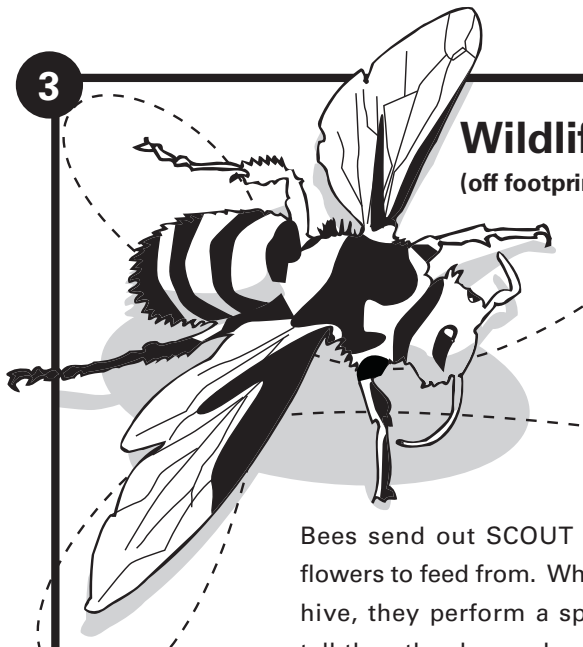
CLUE: Look on the information panels



ZSL

The Zoological Society of London is the charity behind London Zoo and Whipsnade Wild Animal Park. Registered Charity no. 208728

3



Wildlife Garden

(off footprint 6) Walk slowly around the wildlife garden looking closely at the plants and counting any bees you see!



How many bees did you find?

Bees send out SCOUT bees to hunt for good flowers to feed from. When they get back to their hive, they perform a special 'waggledance' to tell the other bees where the good flowers are.

What did the bee say to the flower?
What time do you open?

4



Asian Lions (off footprint 9)

Ruchi, one of our female lions, has had many CUBS (baby lions).



How many CUBS has she had?
CLUE: Read the panel on Ruchi

What did the lion say to his cubs when he taught them to hunt?
Don't cross the road 'til you see the zebra crossing!

5



Tigers

Lots of tiger CUBS have also been born at London Zoo.



Tick the year our first CUB was born?
CLUE: Read the information panel.

1994 1995 1996 1997

6

Leaf cutter ants (B.U.G.S! off footprint 7)

Ants are GUIDED back to their nests by a trail of smells that they each leave behind as they walk.



Watch the leaf cutter ants carefully
Draw in a piece of leaf being carried by an ant.

What's an insect's favourite sport?

Cricket!



7

Cave crickets (B.U.G.S!)

Cave crickets live in the dark so they cannot use their eyes to find their way around. Instead, they use their very long antennae to GUIDE themselves about. Put your head 'in' their cave and look for them near the lights.



Draw the long antennae on this cricket.