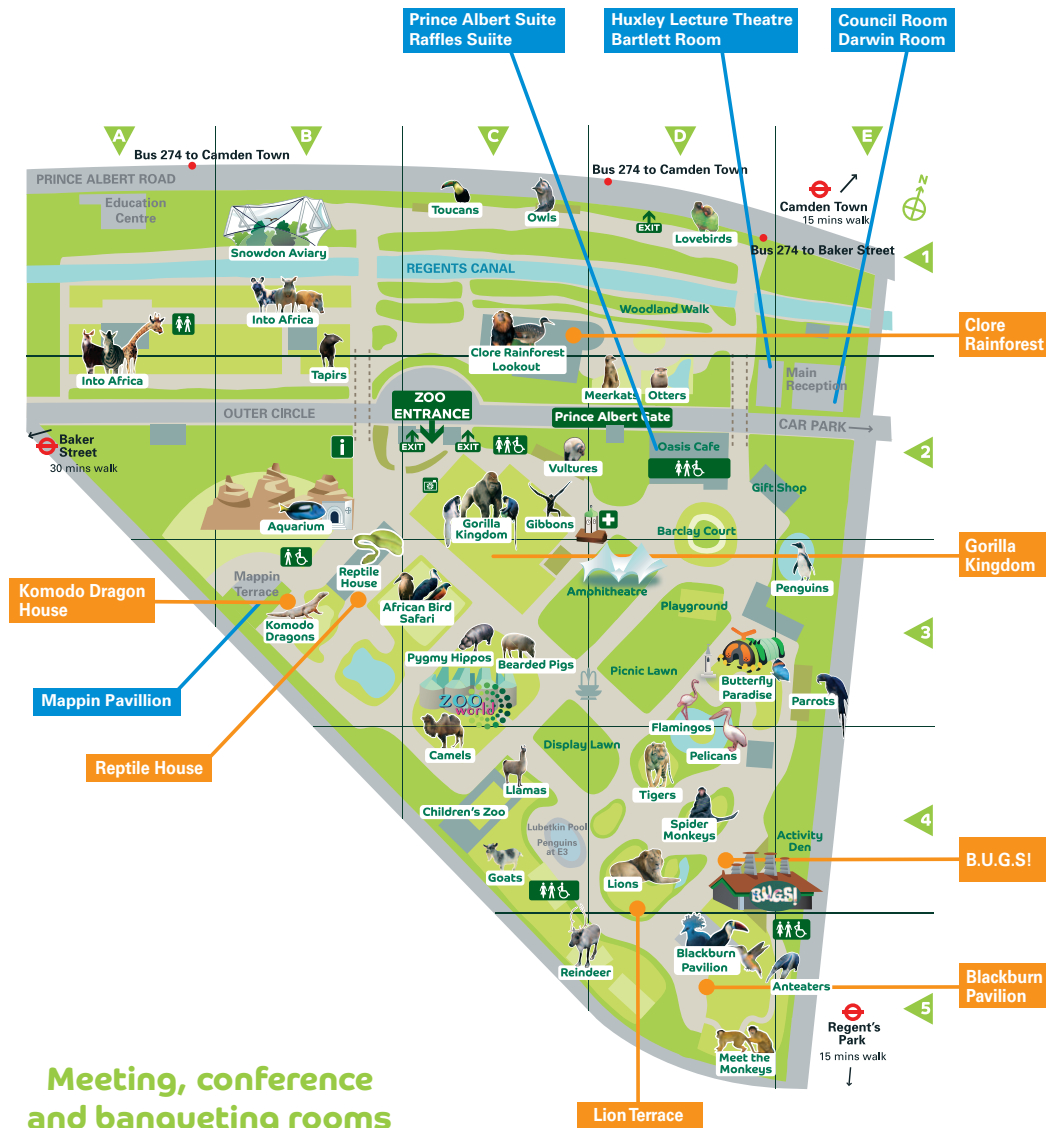


# Venue locations



Meeting, conference  
and banqueting rooms

## Camden tube (10 mins)

Exit the station and cross the road in front of you. Continue walking up Parkway for about six minutes. Turn right onto Prince Albert Road for five minutes until you reach the crossing. Turn left and walk over Regent's Canal footbridge. Turn right and ZSL London Zoo is 200 metres up the road.

## Baker Street tube (20 mins)

Exit the station, turn right onto Baker Street, and walk to the end. Cross over Park Road and turn left onto the Outer Circle. Follow this road until you reach the Zoo's main entrance on your right. Alternatively, catch the 274 bus from Baker Street to Ormonde Terrace.

## Rail (nearest station Euston)

From Euston take bus 253 from bus stop G towards Narroway/ Hackney Central to Camden High Street. At Camden High Street go to stop T and take bus 274 (towards Victoria Gate) to ZSL London Zoo.

## By Bus

From Marble Arch and Baker Street, bus 274 runs to Ormonde Terrace. From Oxford Street and Great Portland Street, bus C2 runs to Gloucester Gate.

## By Car

ZSL has extensive parking facilities, and is located outside the congestion charge zone.