

The Wildlife Wood Project

Working with the timber industry to manage wildlife sustainably



ZSL Conservation



© Chris Ransom / ZSL

The Congo Basin Forests

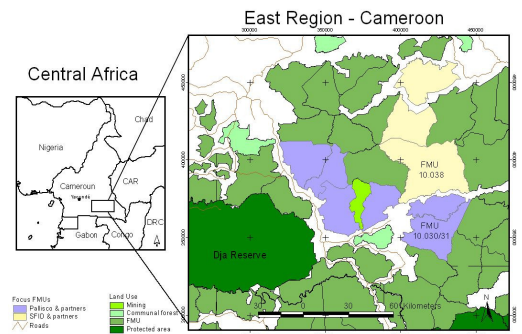
- The Congo Basin forest covers over 2 million km², a vital resource for the region and home to a vast array of biodiversity.
- Between 30-40% of the remaining forests are allocated as timber concessions.
- How these concessions are managed will have a critical role to play in ensuring a future for the biodiversity of the Congo Basin.



© ZSL/SFID

Sustainable wildlife management in timber concessions

Almost 40% of the vast Congo Basin forest has been allocated for timber concessions. By contrast, protected areas, although crucial for wildlife conservation represent less than 12% of the remaining forests in the region and are often too small or fragmented to support wide ranging species. The exploitation of valuable timber provides a significant contribution to the development of the region but can have an adverse impact on wildlife populations. Improved wildlife management in timber concessions is therefore critical and increasingly important to enable timber producers to access important markets. ZSL's Wildlife Wood Project (WWP) helps logging companies adopt low-impact logging practices and apply innovative, practical and cost-effective measures for managing wildlife in their concessions, thus helping to provide a sustainable future for wildlife and people.



Map showing our present area of intervention with our partners, Pallisco and SFID in south east Cameroon

Working with industry to ensure a future for wildlife and forests in the Congo Basin

An opportunity exists to reconcile economic needs with wildlife conservation and ensure that development in the Congo Basin is sustainable. Policy mechanisms to facilitate this are in place e.g. national forest laws, FSC standards, FLEGT and government procurement policies. These continue to expand and develop but the practical tools to achieve improvements on-the-ground are not readily available to concessionaires and forestry authorities. Recognizing this, ZSL developed the Wildlife Wood Project (WWP) in 2007 and in Cameroon established a partnership with two progressive timber producers, Pallisco and SFID (Rougier) who together manage over 6,200 km² of forest, larger than the adjacent Dja Biosphere Reserve. ZSL provides expertise in monitoring wildlife and illegal activities, community engagement, training and technical support to enable our partners to develop, implement and achieve improved wildlife management within their concessions.

The Zoological Society of London (ZSL), founded in 1826, is a world-renowned centre of excellence for conservation science and applied conservation (registered charity in England and Wales). ZSL's Mission is to promote and achieve the worldwide conservation of animals and their habitats. This is realised by carrying out field conservation and research in over 50 countries across the globe, carrying out original scientific research at our Institute of Zoology, and through education and awareness at our two zoos, ZSL London Zoo and ZSL Whipsnade Zoo, inspiring people to take conservation action.

The Wildlife Wood Project

Working with the timber industry to manage wildlife sustainably

Wildlife
WOOD
PROJECT

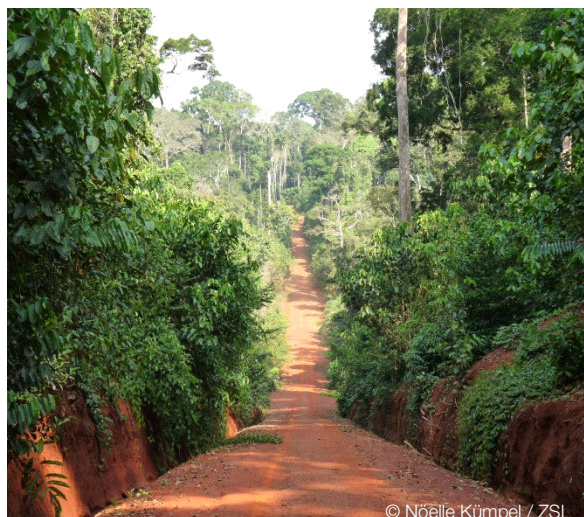
ZSL
LIVING CONSERVATION

ZSL Conservation

Aims and Objectives

The Wildlife Wood Project brings corporate skills and commitment together with conservation science expertise to enable the timber industry to contribute to a sustainable future for wildlife across the forests of the Congo Basin. It does this by incorporating wildlife issues within concession management and providing companies with the capacity to achieve this through:

- assisting timber companies to develop and implement comprehensive wildlife management plans for their concessions
- building capacity within timber companies and the relevant government departments to carry out, monitor and certify these management plans
- Facilitating the involvement of local communities in the management of their forest resources
- improving monitoring and control of illegal activities to support initiatives such as the EU's FLEGT (Forest Law Enforcement and Governance in Trade) framework
- assisting companies in identifying, managing and monitoring areas of High Conservation Value (HCV) with a particular focus on priority flagship species; the great apes and forest elephant.
- ongoing research to improve understanding of the direct and indirect impacts of logging on biodiversity in timber concessions and guide improved management.



Future directions

With the success of the Wildlife Wood Project partnerships to date we plan to apply broaden the scope of its activities:

- Establishing new partnerships so that the wildlife management and monitoring systems developed can be applied in production forests elsewhere in the Congo Basin and ultimately further afield
- working at the policy level with national and international authorities and certification bodies to ensure that laws/standards incorporate indicators of good wildlife management helping drive uptake of best practice and providing clear and consistent guidelines for companies on wildlife management in timber concessions
- the management and monitoring model will also be applicable to other systems of forest management such as proposed REDD (reduced emissions from deforestation and forest degradation) schemes, allowing the incorporation of a verifiable measure of biodiversity.

Collaborators and supporters



More information

For more information on this project please contact Chris Ransom (chris.ransom@zsl.org) www.zsl.org/wildlifewoodproject